



## Supply Chain Risk Management

Understand dependencies and impact across your multi-tier supply chain

### Gain insights into supplier dependencies to predict and mitigate risk, and optimize supply chain strategies to prevent disruptions before they happen.

While obtaining reliable data about your direct suppliers is crucial, a substantial portion of supply chain risk and disruption comes from second and third-tier suppliers you may not even be aware of. Uncovering these dependencies is critical to a more complete understanding of your overall risk exposure, which may expose potential bottlenecks, an over-reliance on single-source suppliers, localized labor issues, regulatory violations, and more. Craft Supply Chain Risk Management helps you identify and mitigate risk from not just your suppliers, but your suppliers' suppliers.

### Craft simplifies the management of complex, global supply chains.

Expand your visibility of risk across your entire supply chain, and understand dependencies with multi-tier mapping and impact assessments that leverage your operational data. With comprehensive risk data, integrated case management, and collaborative workflows, you have everything you need to take action and quickly optimize supply chain strategies. With Craft Supply Chain Risk Management, you can avoid unseen regulatory risks and unethical labor practices from tier-two and tier-three suppliers, and eliminate reliance on risky single-source suppliers that create bottlenecks.

The Craft Platform, also known as **CRAIG** (Commercial Research Analysis Information Gateway) is used by over 21 agencies in the Department of Defense

### Everything you need for large-scale vendor evaluations, monitoring, and risk mitigation in a single platform

- Multi-tier Mapping and Dependencies
- Impact Assessment from your Operational Data
- Centralized Risk Hub
- Alerts & Industry Benchmarks
- Holistic Company Profiles & Comparisons
- Advanced Search and Filters
- Customizable Supplier Portfolios
- User-friendly Collaboration
- Case Management

## Comprehensive supplier profiles with over 500 data points per company



### FOREIGN INVESTORS

Foreign Global Ultimate Ownership  
Foreign investments  
Funding Rounds



### FOREIGN AFFILIATIONS

Politically exposed people  
Foreign affiliations



### FOREIGN INFLUENCE IN TECHNOLOGY TRANSFER

Joint ownership patents  
Direct transfer of patents  
Indirect transfer of patents  
Transfer of patents to state-owned entity (SOE)



### FINANCIAL AND FRAUD RISK

Financial statements  
Historical revenue growth  
Cost of goods  
Gross profits  
Financial ratios  
Price to earnings ratio  
Credit scores  
Acquisitions and subsidiaries



### CYBER RISK

Cybersecurity scores  
Network Security  
Application security  
DNS Health  
Patching cadence  
Endpoint security  
Hacker chatter

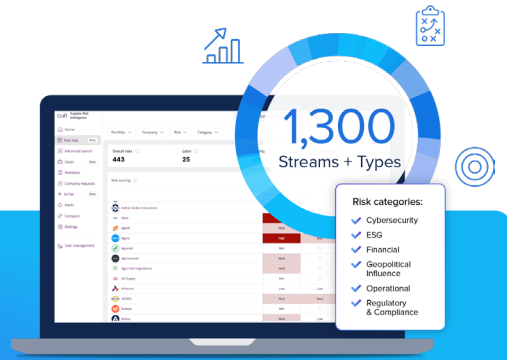


### REGULATORY AND COMPLIANCE VIOLATIONS

Comprehensive ESG data  
Government sanctions  
Regulatory enforcement lists  
Adverse media

# Craft Supply Chain Risk Management

is powered by scalable, enterprise-grade modules and configurable to your needs



## CRAFT SENSE

Get a complete view of your suppliers with reliable intelligence across all risk domains.



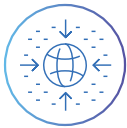
## CRAFT PROTECT

Mitigate supply chain disruption with hyper-relevant signals, tailored alerts and continuous monitoring.



## CRAFT OPERATE

Manage risk and ensure compliance at scale with centralized case management and collaboration.



## CRAFT IMPACT

Understand the impact of events on your operations with n-tier mapping and 3rd party supplier intelligence.

## Why Craft?

### Advanced Data Fabric

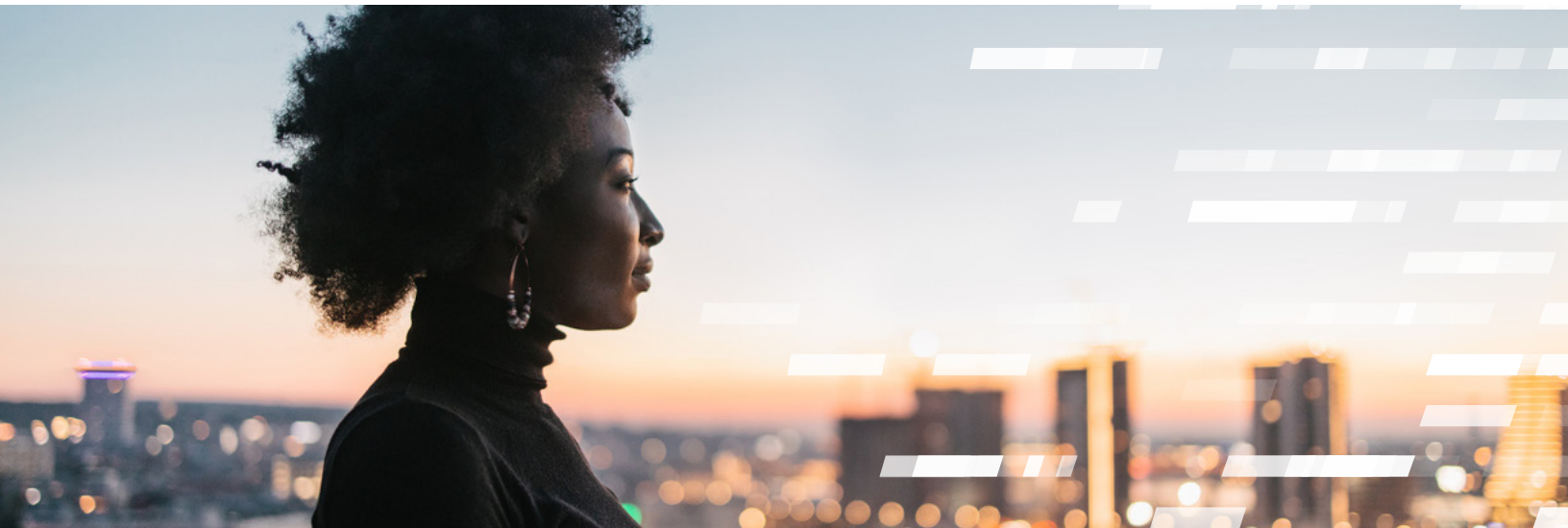
1,300+ data streams that easily integrate with data on your locations, products, projects, and more.

### Highly Configurable Alerts

Get the proactive alerts you need to manage all your supply chain risks.

### Dynamic Collaboration

The industry's most user-friendly SRM platform that accelerates information sharing and action.



Learn more about how Craft can help you evaluate and monitor vendors at scale to create a **more resilient supply chain.**

Contact Brian Mackerer to learn more

[brian@craft.co](mailto:brian@craft.co) | 949-275-4919

Cage# 8JU11 | DUNS# 080938113 | UEID# L37AGJD6DXG9